



Saxon Weald

at

WICKHURST GREEN



Saxon  
Weald





# Saxon Weald

at

## WICKHURST GREEN

Broadbridge Heath, West Sussex

Enjoy a relaxed way of life at Wickhurst Green, a brand-new development of homes conveniently located close to the historic market town of Horsham.

Built by Bovis Homes, our attractive, energy-efficient two and three bedroom houses are due for phased release from summer 2014 until spring 2016 and are for shared ownership purchase.

# A better life...



Wickhurst Green is a new development of high-quality homes at Broadbridge Heath, near Horsham in West Sussex, close to the South Downs National Park, the south coast and beautiful local countryside...



- Broadbridge Heath leisure centre is within easy walking distance, with a gym, fitness studio, running track and many activities for adults and children. Tesco's superstore is also a short walk or drive away from your new home.
- The private gym Bluecoats Sports at nearby Christ's Hospital School has a pool, fitness suite and racket sports.
- Proposals for Wickhurst Green include a primary school, recreation areas and a village centre with GP surgery and other amenities.
- Horsham town centre is approximately two miles away and offers many attractions, including a cinema and theatre complex at the Capitol.
- Horsham has excellent access to motorways. There are rail links to Gatwick, London Victoria and London Bridge (peak-times only), and the south coast.
- Warnham Nature Reserve and the Downs Link foot and cycle way, which runs for 36 miles between the North and South Downs, are both a short distance away.





Award Winner  
"Best Value Restaurant"  
"If the elegance, informality  
and buzz of a classic  
Parisian bistro"  
Good Food Guide 2008

**CÔTE**  
BRASSERIE

OPEN FOR COFFEE  
AND BREAKFAST

• Daily French  
• Breakfast  
• Light Lunches  
• Sweet & Savory

WIFI



# *a look inside...*

Built of traditional brick and tile, our houses feature double-glazing and highly efficient insulation to keep you cosy and your heating bills low.

We want to make life in your new home as simple as possible – just move in and enjoy thoughtful touches including fitted carpets, a washer/dryer, fridge/freezer, integrated oven, hob and extractor fan.

## ■ Kitchen

Fully-fitted with white, shaker-style units  
Integrated oven and hob  
Extractor fan  
Fridge/freezer  
Washer/dryer  
Vinyl flooring

## ■ Bathroom

White bathroom suite  
Wall mounted shower with glass screen  
Vinyl flooring

## ■ Cloakroom / WC

White WC, hand basin  
Vinyl flooring

## ■ Heating

Combi boiler providing gas central heating to radiators and 'on demand' hot water

## ■ Internal fittings

TV points in lounge and master bedroom  
Telephone points in hall, lounge and master bedroom

## ■ Outside

Parking for one car  
Garden shed  
Rotary washing line  
Waterbutt

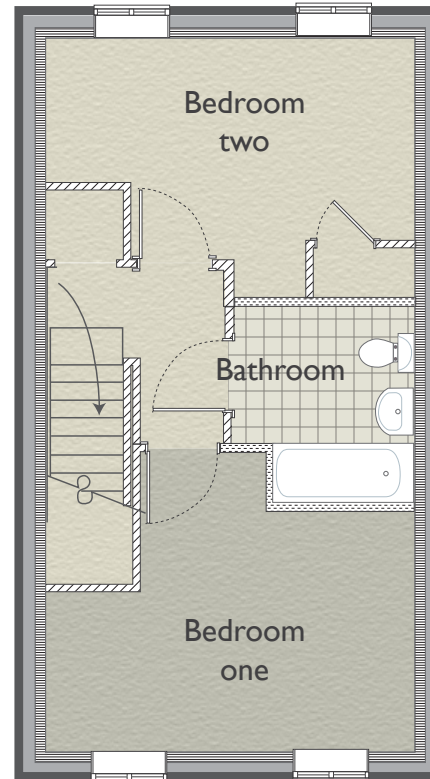
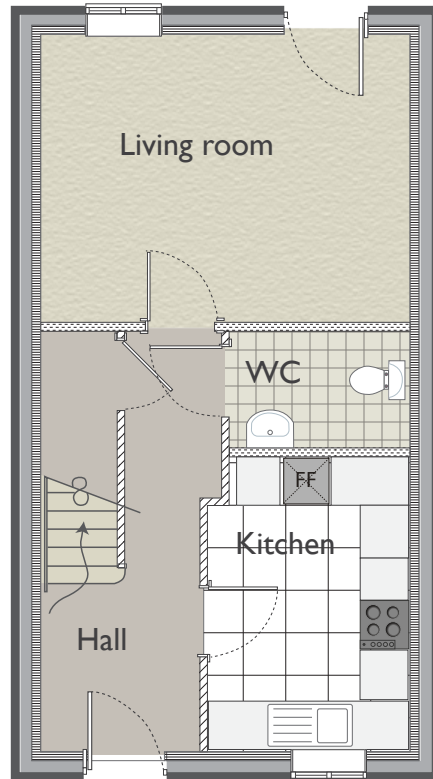


CGI (artist's impression)





## Floor plan for a two-bedroom semi-detached



■ Living room: 4.45m x 3.46m

■ Kitchen: 3.58m x 2.46m

■ WC: 2.17m x 1.41m

■ Bedroom one: 4.45m x 3.16m

■ Bedroom two: 4.45m x 2.92m

■ Bathroom: 2.37m x 2.25m

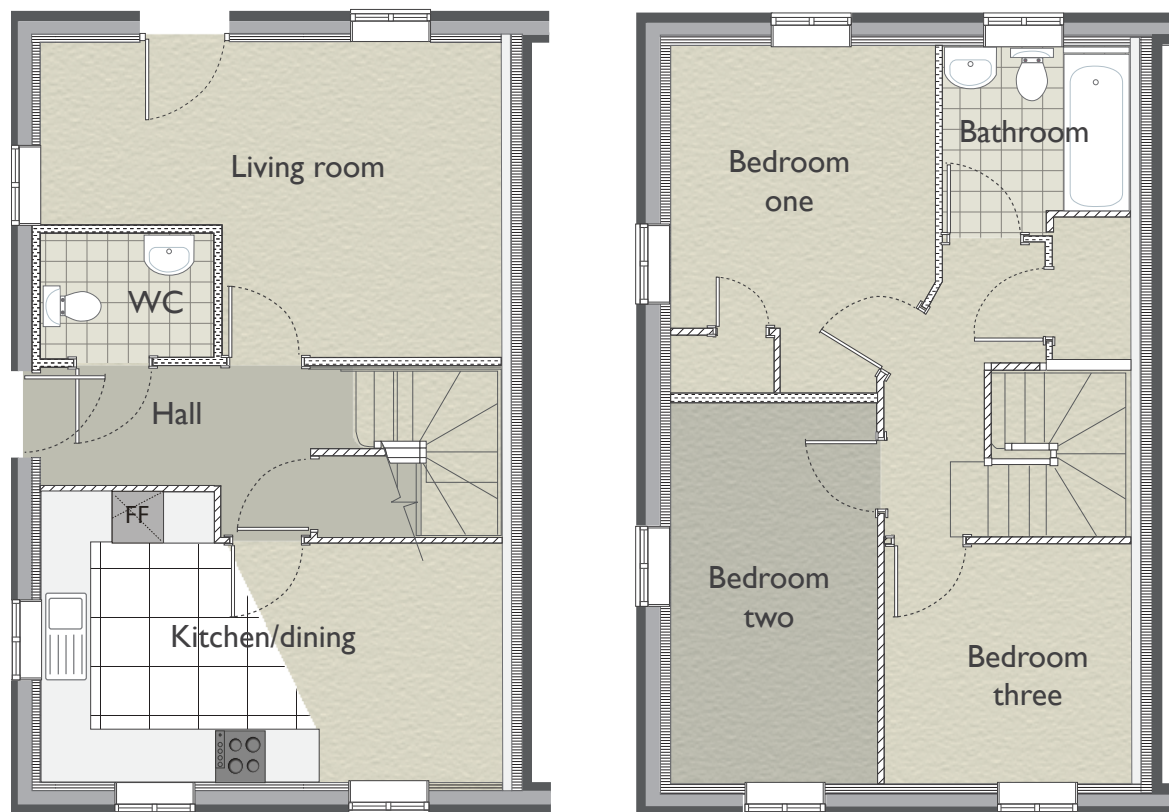
■ Total floor area: 77.2 sq m  
(including hall)

Measurements taken at largest points



Plans, layouts and specifications may not be to exact scale and are given as an indication only.

## Floor plan for a three-bedroom end of terrace (type A)



- Living room: 5.38m x 3.70m
- Kitchen/dining: 5.38m x 3.41m
- WC: 2.04m x 1.43m
- Bedroom one: 4.08m x 3.09m
- Bedroom two: 4.45m x 2.42m
- Bedroom three: 2.88m x 2.80m
- Bathroom: 2.20m x 1.95m

Total floor area: 93.4 sq m  
(including hall)

Measurements taken at largest points



CGI (artist's impression)

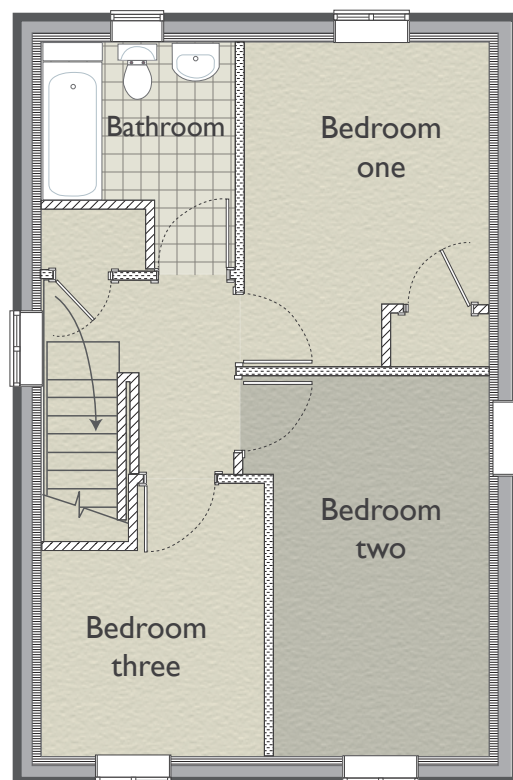


Plans, layouts and specifications may not be to exact scale and are given as an indication only.





## Floor plan for a three-bedroom end of terrace (type B)



- Living room: 5.38m x 3.40m
- Kitchen/dining: 3.61m x 3.30m
- WC: 2.67m x 1.43m
- Bedroom one: 3.95m x 2.99m
- Bedroom two: 4.58m x 2.64m
- Bedroom three: 3.32m x 2.67m
- Bathroom: 2.77m x 2.31m

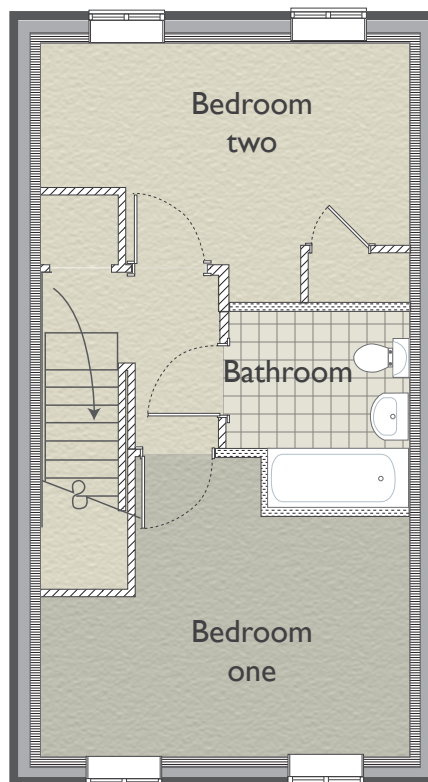
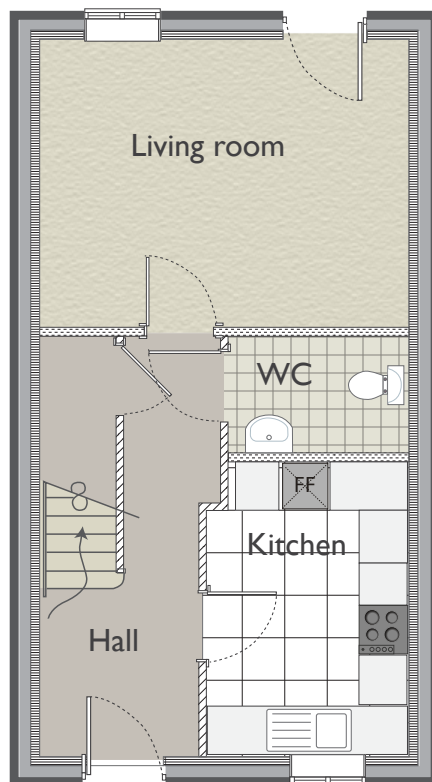
Total floor area: 93.4 sq m  
(including hall)

Measurements taken at largest points



CGI (artist's impression)

## Floor plan for a two-bedroom mid terrace



- Living room: 4.45m x 3.46m
- Kitchen: 3.58m x 2.46m
- WC: 2.17m x 1.41m
- Bedroom one: 4.45m x 3.16m
- Bedroom two: 4.45m x 2.92m
- Bathroom: 2.37m x 2.25m
- Total floor area: 77.2 sq m (including hall)

Measurements taken at largest points



CGI (artist's impression)





Plans, layouts and specifications may not be to exact scale and are given as an indication only.











# how to purchase...

## About shared ownership



Our properties at Wickhurst Green, Broadbridge Heath are available to purchase through shared ownership. You buy a percentage of the value of the property and pay rent on the remainder. Over time many people increase their share in their property (known as stair-casing), often to 100% of its value.

In order to buy a house at Wickhurst Green you need to register with **bpha**, the Help to Buy agent in your area.



Go to the website: [www.helptobuyeastandsoutheast.uk.com](http://www.helptobuyeastandsoutheast.uk.com)  
or call 03333 214 044

Applicants must live or work in the district of Horsham. Priority will be given to Ministry of Defence workers and housing association tenants subject to affordability criteria.

For more information about buying a Saxon Weald house at Wickhurst Green please call our Sales team on 01403 226035/226145  
or email: [sales@saxonweald.com](mailto:sales@saxonweald.com)

\* Subject to eligibility. Your home is at risk if you do not keep up with rent and mortgage repayments.



These details have been prepared in good faith and are believed to be correct at the time of production (Wickhurst Green). Photographs shown are examples only. Plans, elevations, layouts and specifications are given as an indication only and may be subject to change. Computer generated property images (CGIs) may not be to exact scale or specification. Trees and landscaping are for illustration only and may alter during construction. The information and details provided are prepared for the interest and guidance of potential residents but do not form part of any contract or constitute an offer.





Saxon  
Weald

**Head Office**

Saxon Weald House  
38-42 Worthing Road, Horsham  
West Sussex RH12 1DT

Tel: 01403 226000

Fax: 01403 226100

email: [info@saxonweald.com](mailto:info@saxonweald.com)

[www.saxonweald.com](http://www.saxonweald.com)