



WEALD *Living*

by Saxon Weald

ALDEN COURT

HORSHAM

CONTEMPORARY ONE AND TWO BEDROOM HOMES WITH THE CONVENIENCE OF TOWN CENTRE LIVING

ALDEN COURT

ALDEN COURT

HORSHAM



Important Notice. The artist's impressions, floor plans, configurations and layouts are included for guidance only. All such matters must be treated only as an illustration; their accuracy is not guaranteed, nor do they constitute part of any contract or warranty. All measurements are approximate. Prospective purchasers are requested to check before entering into negotiations as to whether the specification has changed.

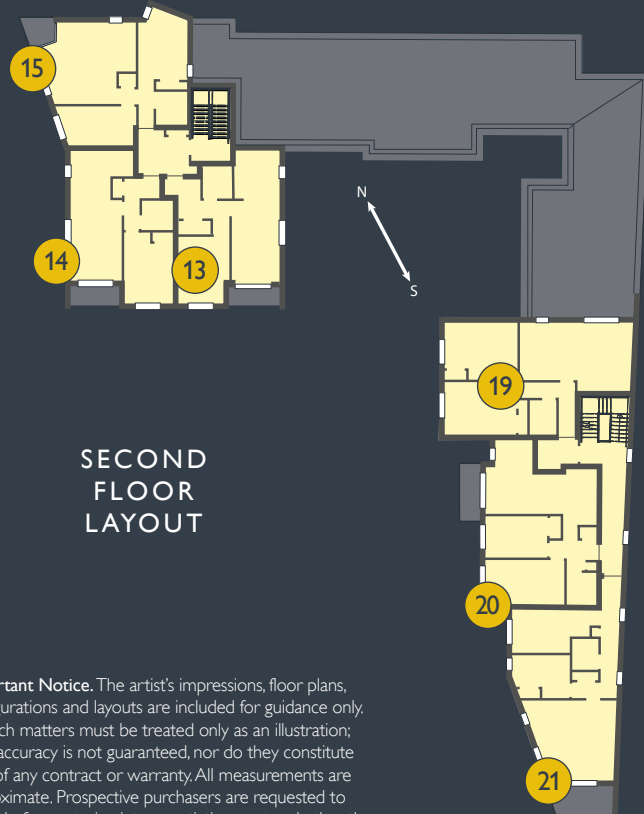
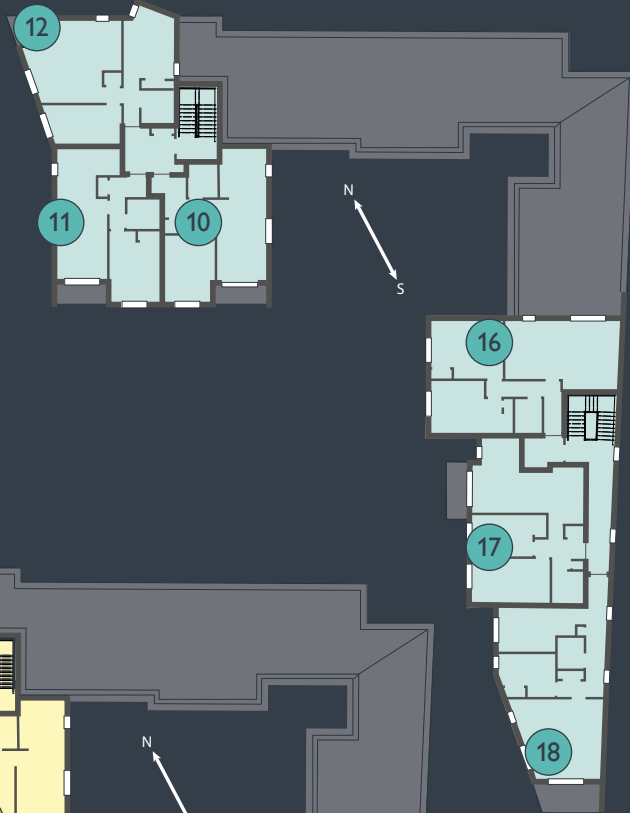
ALDEN COURT - development layout



GROUND FLOOR PROPERTIES
 FIRST FLOOR PROPERTIES
 SECOND FLOOR PROPERTIES

- | | | | |
|---|--|--|--|
| <ul style="list-style-type: none"> 1 Two bedroom apartment 2 Two bedroom apartment 3 One bedroom terraced bungalow 4 One bedroom terraced bungalow 5 Two bedroom terraced bungalow | <ul style="list-style-type: none"> 6 One bedroom terraced bungalow 7 One bedroom apartment 8 Two bedroom apartment 9 Two bedroom apartment 10 One bedroom apartment | <ul style="list-style-type: none"> 11 One bedroom apartment 12 Two bedroom apartment 13 One bedroom apartment 14 One bedroom apartment 15 Two bedroom apartment | <ul style="list-style-type: none"> 16 Two bedroom apartment 17 Two bedroom apartment 18 Two bedroom apartment 19 Two bedroom apartment 20 Two bedroom apartment 21 Two bedroom apartment |
|---|--|--|--|

FIRST FLOOR LAYOUT



SECOND FLOOR LAYOUT

Important Notice. The artist's impressions, floor plans, configurations and layouts are included for guidance only. All such matters must be treated only as an illustration; their accuracy is not guaranteed, nor do they constitute part of any contract or warranty. All measurements are approximate. Prospective purchasers are requested to check before entering into negotiations as to whether the specification has changed. External finishes and features may vary.

GROUND FLOOR LAYOUT



SPECIFICATION

Kitchen

- Modern glossy white Monza style kitchens by Rixonway
- Zanussi fan oven and gas hob
- Zanussi integrated fridge freezer
- Indesit integrated washer/dryer
- Black quartz effect laminate worktops
- Spotlights
- Under cupboard lighting

Bathroom

- Contemporary white sanitary ware with basin, bath, shower over bath and WC
- Heated chrome towel rail
- Large mirror with shaver socket

Internal

- PVCu high efficiency double glazed windows
- PVCu patio doors to garden or balcony
- Airing cupboard with shelving
- Smoke detector and carbon monoxide alarms
- Gas central heating powered by Worcester Bosch combi boiler
- Wood effect vinyl throughout, with neutral carpets to bedrooms and hallway

External

- One parking space per property, some with car charging facilities
- Managed landscaped communal gardens for the enjoyment of all residents
- External lighting to all front doors and terraces
- Door entry system



Plot 1 ALDEN COURT

TWO BEDROOM APARTMENT - GROUND FLOOR

Modern ground floor apartment with fabulous open-plan living area. The well-appointed kitchen opens onto the reception room with plenty of space to dine. Doors opening out onto the patio garden fill the space with light. There are two double-bedrooms, one with direct access to a second private patio. A good-sized contemporary bathroom comes off the hall.



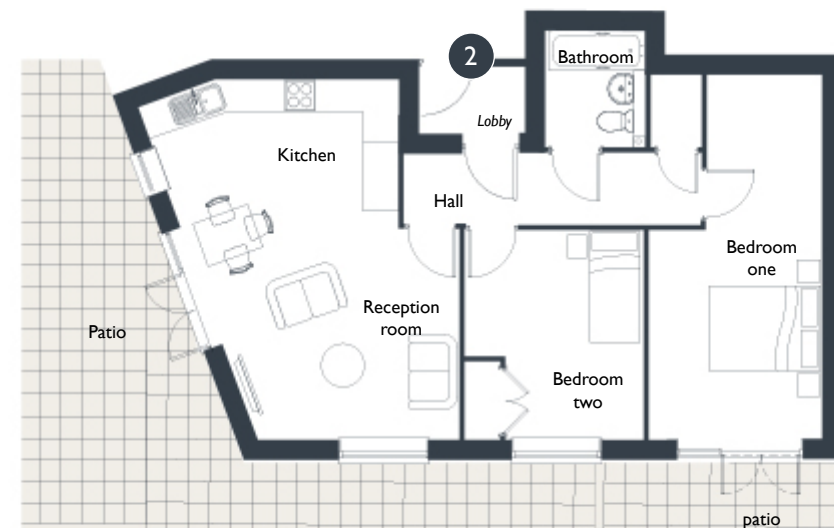
AREAS

Room	m	Room	m	Total Area
Reception room	3.8 x 4.8	Bedroom two	3.7 x 3.0	61.8 m ²
Kitchen	2.5 x 3.2	Bathroom	1.7 x 2.0	
Bedroom one	3.7 x 3.8			

Plot 2 ALDEN COURT

TWO BEDROOM APARTMENT - GROUND FLOOR

This ground floor apartment is designed with modern living in mind and has a spacious open-plan kitchen / living room with doors opening out onto your private patio. There is a very generous master bedroom which also has patio doors, and a further bedroom. A contemporary bathroom is accessed from the hall.



AREAS

Room	m	Room	m	Total Area
Reception room	4.2 x 3.7	Bedroom two	3.2 x 3.7	65.9 m ²
Kitchen	4.2 x 2.7	Bathroom	1.8 x 2.0	
Bedroom one	3.1 x 6.4			

Plot 3 ALDEN COURT

ONE BEDROOM TERRACED BUNGALOW

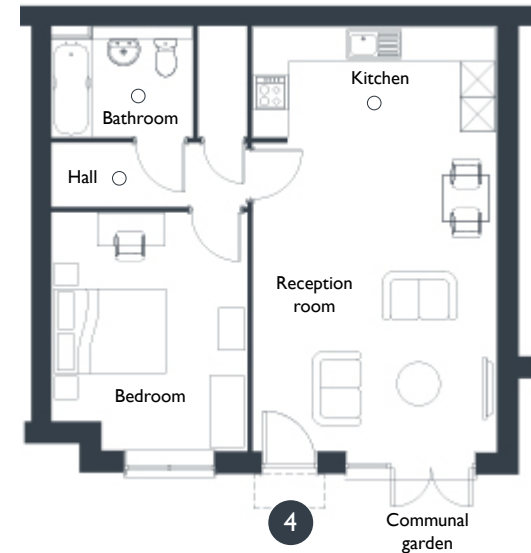
The open-plan reception room of this one bedroom bungalow is generous, with plenty of space to cook, eat and relax. The lounge area has patio doors offering access to the garden. The property further benefits from a well-proportioned double bedroom and a modern bathroom. Additional natural light is provided from sun tubes in the ceilings.



Plot 4 ALDEN COURT

ONE BEDROOM TERRACED BUNGALOW

This bungalow has all you need to enjoy modern town centre living with a spacious open-plan living area with patio doors leading out to the communal garden. Additional natural light is provided from sun tubes in the ceilings. There's a good-sized hall, with potential for a small home office. The property is completed with a double bedroom and contemporary bathroom.



AREAS

Room	m	Room	m	Total Area
Reception room	4.4 x 4.8	Bedroom	2.7 x 5.2	53.7 m ²
Kitchen	4.7 x 1.9	Bathroom	2.4 x 1.9	

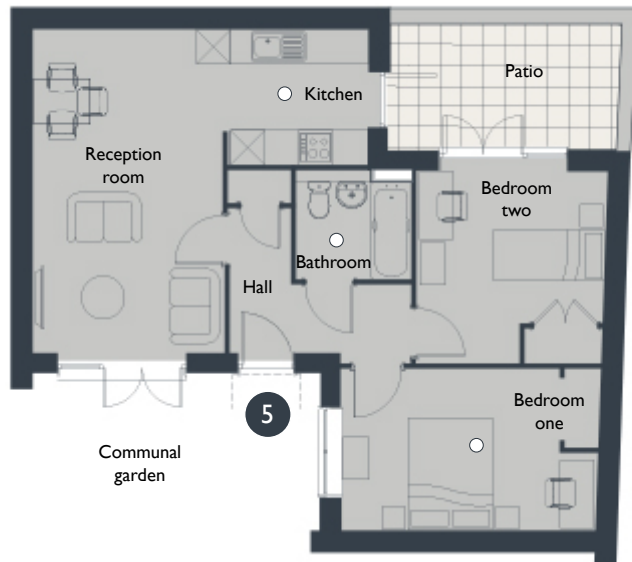
AREAS

Room	m	Room	m	Total Area
Reception room	4.0 x 5.3	Bedroom	3.4 x 3.6	54.5 m ²
Kitchen	4.2 x 1.9	Bathroom	2.5 x 1.9	

Plot 5 ALDEN COURT

TWO BEDROOM TERRACED BUNGALOW

This bungalow has a great L-shaped open-plan living space with its own private patio leading from the kitchen. It offers versatile living with two good-sized bedrooms, the second of which could make an ideal home office if you chose, with doors leading to the patio. Sun tubes in the ceilings provide additional natural light. The property is completed with a contemporary bathroom.



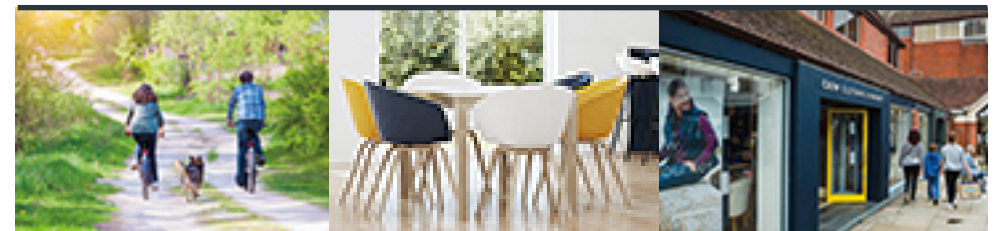
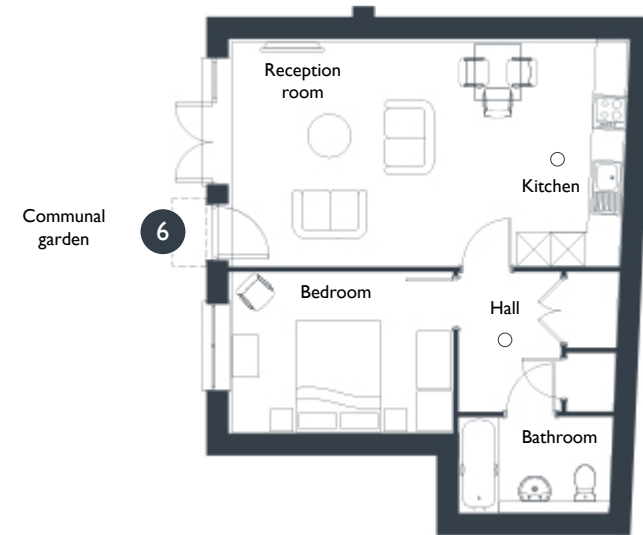
AREAS

Room	m	Room	m	Total Area
Reception room	3.4 x 5.7	Bedroom two	3.3 x 3.4	61.8 m ²
Kitchen	2.5 x 2.4	Bathroom	2.1 x 1.9	
Bedroom one	4.6 x 2.9			

Plot 6 ALDEN COURT

ONE BEDROOM TERRACED BUNGALOW

The open-plan reception room of this one bedroom bungalow is generous, with plenty of space to cook, eat and relax. The lounge area has patio doors offering access to the communal garden. The property further benefits from a well-proportioned double bedroom, great storage and a modern bathroom. Additional natural light is provided from sun tubes in the ceilings.



AREAS

Room	m	Room	m	Total Area
Reception room	4.1 x 4.0	Bedroom	4.0 x 2.9	51 m ²
Kitchen	2.9 x 4.0	Bathroom	2.1 x 1.7	

Plot 7 ALDEN COURT

ONE BEDROOM APARTMENT - GROUND FLOOR

Modern ground floor apartment with a spacious open-plan living area with space to cook, dine and relax. There's a good-sized double-bedroom with built-in wardrobe and a contemporary bathroom.



AREAS

Room	m	Room	m	Total Area
Reception room	4.4 x 3.9	Bedroom	4.6 x 3.1	51 m ²
Kitchen	3.0 x 3.9	Bathroom	1.7 x 2.5	

Plot 8 ALDEN COURT

TWO BEDROOM APARTMENT - GROUND FLOOR

This generously proportioned ground floor apartment has two double bedrooms, good storage and a modern family bathroom. But it's the spacious L-shaped, open-plan living / dining area that really sets this home apart with its stylish, modern kitchen and access to the gardens.



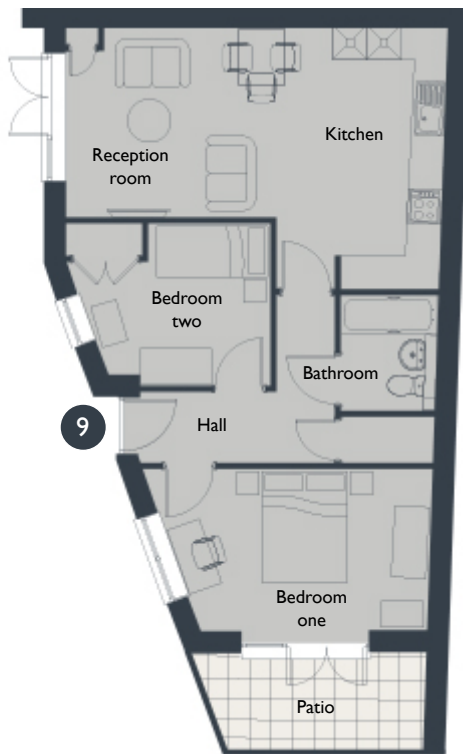
AREAS

Room	m	Room	m	Total Area
Reception room	4.9 x 3.2	Bedroom two	4.8 x 2.2	71.1 m ²
Kitchen	3.7 x 4.9	Bathroom	2.2 x 1.9	
Bedroom one	4.8 x 2.7			

Plot 9 ALDEN COURT

TWO BEDROOM APARTMENT - GROUND FLOOR

Modern ground floor apartment with a generous kitchen, which leads onto the reception room and dining area. There are patio doors to the garden from the lounge, while the light-filled master bedroom has doors out to a private terrace. There is a second bedroom with built in wardrobes and a contemporary bathroom completes the property.



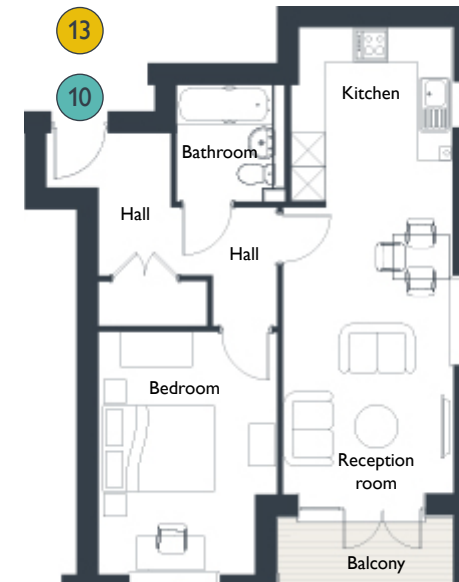
AREAS

Room	m	Room	m	Total Area
Reception room	4.8 x 3.4	Bedroom two	3.3 x 2.9	61.8m ²
Kitchen	1.9 x 4.7	Bathroom	1.7 x 2.1	
Bedroom one	4.6 x 2.9			

Plots 10 & 13 ALDEN COURT

ONE BEDROOM APARTMENT - 1st & 2nd FLOORS

These apartments on the first and second floors respectively offer bright and spacious open-plan living spaces with patio doors out to a good-sized balcony. There's a generous double-bedroom, contemporary bathroom and storage off the hall.



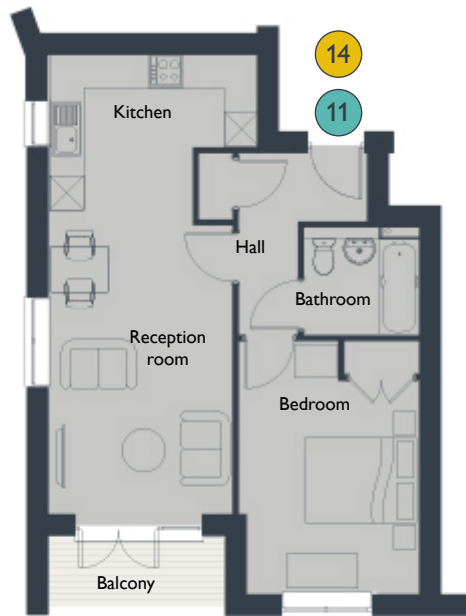
AREAS

Room	m	Room	m	Total Area
Reception room	3.0 x 5.1	Bedroom	3.2 x 4.3	51.6 m ²
Kitchen	2.9 x 3.1	Bathroom	1.9 x 2.1	

Plots 11 & 14 ALDEN COURT

ONE BEDROOM APARTMENT - 1st & 2nd FLOORS

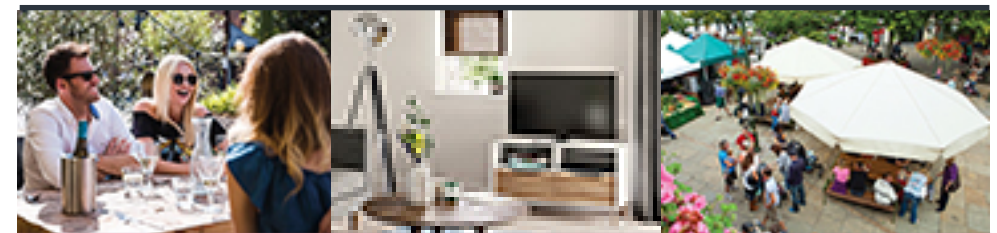
These apartments offer bright and spacious open-plan living spaces with patio doors out to a good-sized balcony. There's a generous double-bedroom with fitted wardrobes, contemporary bathroom and storage off the hall.



Plots 12 & 15 ALDEN COURT

TWO BEDROOM APARTMENT - 1st & 2nd FLOORS

Modern first and second floor apartments with bright open-plan living spaces and private balconies. There are two bedrooms: a double with fitted wardrobe and a smaller bedroom, which could also be used as a home office. The property is completed with a good-sized bathroom off the hall.



AREAS

Room	m	Room	m	Total Area
Reception room	3.3 x 5.1	Bedroom	3.2 x 4.5	51.4m ²
Kitchen	3.7 x 3.0	Bathroom	2.1 x 1.9	

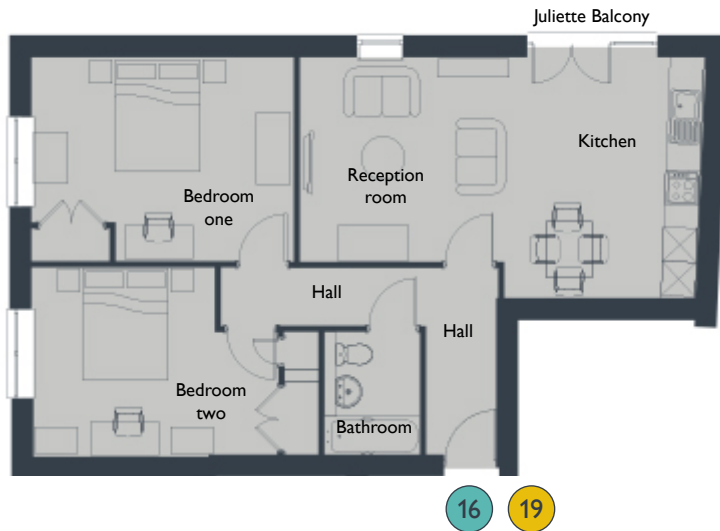
AREAS

Room	m	Room	m	Total Area
Reception room / kitchen	4.5 x 5.2	Bedroom two	4.2 x 2.6	62.5 m ²
Bedroom	3.1 x 4.2	Bathroom	1.9 x 2.1	

Plots 16 & 19 ALDEN COURT

TWO BEDROOM APARTMENT - 1st & 2nd FLOORS

These apartments are bright and generously proportioned with large open-plan living spaces. The modern kitchen area has space for a dining table and benefits from a Juliette balcony. There are two double-bedrooms, both with built-in wardrobes and a contemporary bathroom off the hall.



AREAS

Room	m	Room	m	Total Area
Reception room / kitchen	7.6 x 4.3	Bedroom two	4.4 x 3.4	72.4 m ²
Bedroom one	4.6 x 3.6	Bathroom	1.7 x 2.2	

Plots 17 & 20 ALDEN COURT

TWO BEDROOM APARTMENT - 1st & 2nd FLOORS

These apartments offer fabulous open-plan living space. The modern kitchen leads onto the reception room with plenty of space to dine, while doors opening out onto the private balcony fill the room with light. There are two double-bedrooms, and a good-sized bathroom off the hall.



AREAS

Room	m	Room	m	Total Area
Reception room	4.5 x 2.5	Bedroom two	3.9 x 2.7	63.5 m ²
Kitchen	2.0 x 3.6	Bathroom	1.9 x 2.1	
Bedroom one	5.0 x 2.9			

Plots 18 & 21 ALDEN COURT

TWO BEDROOM APARTMENT - 1st & 2nd FLOORS

These two-bedroom apartments offer modern open-plan living, making the most of your space. The stylish kitchen leads out onto your private, south-facing balcony. There are two bedrooms, one a double and another with a built-in wardrobe, would make a fantastic home office if you chose. A contemporary bathroom completes these lovely apartments.



AREAS

Room	m	Room	m	Total Area
Reception room & kitchen	5.0 x 5.0	Bedroom two	3.6 x 2.8	64.8 m ²
Bedroom one	4.9 x 2.7	Bathroom	1.7 x 2.0	



For prices and purchase details for Alden Court, or for information about our other shared ownership properties, please visit our website

www.wealdliving.com



ALDEN COURT
 Bishopric
 Horsham
 West Sussex
 RH12 1FH



WEALD Living

by Saxon Weald

Saxon Weald House
 38-42 Worthing Road
 Horsham, West Sussex
 RH12 1DT

t: 01403 226060

e: sales@wealdliving.com

www.wealdliving.com